

MaxMotion

IEC PERFORMANCE DATA SHEET IEC Efficiency Level IE3

Catalog #: **IJC280S-6-47**

HP	kW	Voltage	L.R. Amps	Efficiency	Power Factor	Service Factor	Frame	Design
60,00	44,76	460 / 796	506,16	94,5%	0,85	1,15	280S	N

60 Hz								
FLA							Is/In	F.L. RPM
208	230	333	460	575	796	990		
/	/	/	70,30	/	40,60	/	7,2	1180

50 Hz								
FLA						Efficiency	Is/In	F.L. RPM
190	380	400	415	660	725			
/	85,80	81,51	78,60	49,40	45,00	93,7%	7,2	985

Wgt. Lbs	PH	Duty	Insul. Class	Ambient Temp.	Elevation	Temp. Rise° C
1107	3	S1	H	40°C	1000 M	65

% Efficiency		% Power Factor		Torque			Protector Type	Winding Resist. Ω
Full Load:	94,5%	Full Load:	0,85	FLT ft.lbs	60Hz	50Hz		
3/4 Load:	90,7%	3/4 Load:	0,72	LRT %	210	210	PTC-150°C	-
1/2 Load:	82,3%	1/2 Load:	0,55	BDT %	200	200		

Rotor Inertia Wk2 Lb-Ft2	Max Load Inertia Wk2 Lb-Ft2	Shaft Material	Frame Material	DE Bracket Type	ODE Bracket Type	Mounting	Enclosure	Protection
-	-	Standard	Cast Iron	Standard	Standard	B3	TEFC	IP55

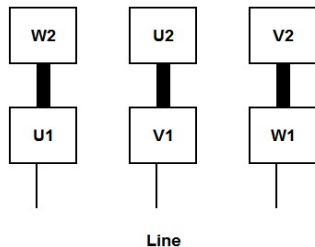
Ball Bearings		Grease	Mount Type	Orientation	Cold Start (Secs)	Paint
DE	ODE					
6317-C3	6317-C3	Mobil PolyRexEM	Rigid	Horizontal	15	Red

Inverter Duty. Motor meets MG1 parts 31.4.4.2	Constant Torque Range	Variable Torque Range
	10:1	20:1

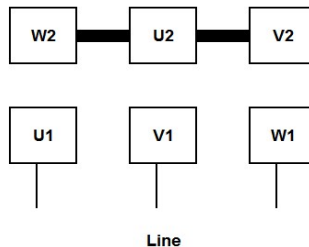
WIRING CONNECTION DIAGRAM : E

IEC Frames 200L - 355L, Dual Voltage
460 / 796 VAC, 6 posts, 6 leads, Δ / Y Connection

Low Voltage (460 Vac)
6 Leads Δ 6 posts



High Voltage (796 Vac)
6 Leads Y 6 posts



Date: **25 janvier, 2024**
 Customer: _____
 Contact: _____
 Submittee: **J.C. Lavallée**

Catalogue #: **IJC280S-6-47**

IEC Efficiency Level IE3											
HP	Kw	VAC	RPM	Enclosure	Frame	Frequency	Design	Poles	LR Is/In	Insulation Class	Temp. Rise °C
60,00	44,76	460 / 796	1180	TEFC	280S	60	N	6	7,2	H	65

Load %	0%	25%	50%	75%	100%	125%	150%
Amps	56,78	56,78	62,19	64,89	70,30	81,12	102,75
Torq ft/lbs	0	65,92	132,40	199,44	267,05	348,09	447,07
RPM	0	1195	1190	1185	1180	1132	1057
Eff %	0	61,6	82,3	90,7	94,5	92,0	84,6
PF %	0	38,8	55,1	71,8	85,0	87,6	89,3

	Locked Rotor	Pull-Up	Breakdown	Rated Load	Idle	Duty	S. F.	Ambient	Elevation	dBA @ 1M
Speed (RPM)	0	540	900	1180	1200	S1	1,15	40°C	3,300 ft	-
Current (Amps)	506,16	404,93	283,45	70,30	56,78	VFD Rating: Meets MG1 parts 31.4.4.2				
Torque (ft-lbs)	560,81	476,69	534,10	267,05	0,0	CT :	10:1	VT :	20:1	

